

CRAWFORDSBURN

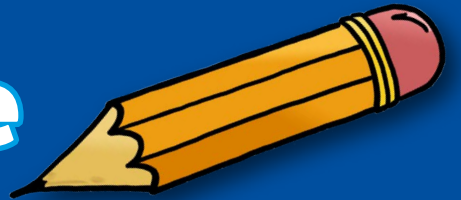
Primary School



“Caring, Creative, Confident”



Principal's Welcome



Dear Parents/Guardians

Firstly, may I welcome you to Crawfordsburn Primary School and thank you for taking the time to consider our prospectus. It is my hope that this prospectus will give you some insight into what makes our school so exceptional.

Summarising, in a few short paragraphs, what Crawfordsburn Primary is, is a difficult task. It has been part of the village for over 100 years, serving the community for generations. What has remained constant over the years is a commitment to a family ethos, where children receive the individual attention they need to flourish. It is a school of high standards; in terms of the curriculum and academically, but also in terms of how children are prepared for the wider world.

The staff are hardworking, dedicated and passionate about the school. We form positive relationships with parents and caregivers which provide the bedrock for our pupils as they take their first steps into education.

Summarising this is difficult, so I would encourage you to visit us so you can experience the warm welcome and the caring, supportive and positive environment that Crawfordsburn can provide for you and your child.

Very best wishes

Dr Graham Walker

Principal





Our School



Crawfordsburn Primary is situated on a superb rural location on the edge of Crawfordsburn Village and a short walk from Crawfordsburn Country Park.

The current school building opened on its mature and spacious grounds in 1952. The school is actively engaged in the process of the planning and development of a new school building.

There are currently over 200 children attending the school from the surrounding area. There is one class for each year group in the school. The school is also equipped with a school hall, library and ICT suite. Bright Sparks, our purpose built pre-school unit, is on-site.

We enjoy a fantastic site that includes playgrounds, grassy areas, a pond, wildlife areas, mud kitchens, play trails, a willow tunnel and an outdoor classroom. When we are finished exploring them there is a beautiful Country Park and beach across the road.





Our Aims

Who we are

Crawfordsburn Primary is a school where children are valued and respected. They are listened to, nurtured and made to feel safe and secure. The staff are enthusiastic, welcoming and innovative. It is a school where everybody is involved, appreciated and supported.

What we want

We want children to be well-rounded, confident and independent individuals who are able to reach their full potential. We want learning to be a positive and fun experience for all children. We want all parents / guardians to feel involved in the school and supported in all aspects of education.

What we do

We do this by understanding, supporting and encouraging children as individuals. We deliver a high quality curriculum designed to develop a wide range of skills and abilities. We create an environment where learning, creativity and hard work are recognised and rewarded.

Our Ethos

The Three Cs of Crawfordsburn

Caring

Crawfordsburn has a true family ethos within a friendly and welcoming environment. Children are taught to care for themselves, their peers and the wider world.

Creative

Creativity is celebrated in Crawfordsburn Primary School. We encourage children to be independent problem solvers. We actively promote their development in all areas of the curriculum. We recognise and reward all their achievements, both inside and outside of school.

Confident

Crawfordsburn is a place where children's confidence is developed and where they learn skills that will be with them for life.



School Curriculum

The Northern Ireland Curriculum consists of six strands;



In the most effective primary classrooms, these areas are not taught as distinct and separate, but are integrated into a comprehensive curriculum. This is how we teach in Crawfordsburn. The six strands of the curriculum are integrated in exciting and interesting topic work that is designed to inspire children. These include topics such as People Who Help Us, Minibeasts, The Titanic, Vikings, Earth and Space, and many, many more.



The Outdoor Classroom

Children at our school are encouraged to be curious about, and care for, the world around them. This is reflected in our strong focus on outdoor learning. From P1, children are encouraged to engage with the outdoors through our play trails, willow tunnel and mud kitchen. We strongly encourage this engagement with the outdoors right through the school with children taking part in specific lessons related to the outdoors and our wonderful surroundings. We also make extensive use of the local forest park and beach.

“We are so lucky in our school that we can use the outdoors to learn.” P6 Child



Learning for the Future

At Crawfordsburn Primary we aim to equip our children for what is an ever changing world. Our curriculum and learning experiences are forward looking and designed to provide children with skills that can be applied in a number of contexts. The use of ICT is an integral part of this, with skills such as coding taught from a young age. We also place a focus on STEM subjects (Science, Technology, Engineering and Mathematics). Recently our pupils received the **Sentinus Big Bang Fair Award**, a STEM challenge from The University of Ulster. We also promote the development of learning for life and work. For example, our P7 group recently won **The Young Enterprise Award** while another group won the **Maths Challenge from Explore Learning**.

Music

There is a strong and proud tradition of music tuition in Crawfordsburn. All our children are exposed to a variety of music lessons, with recorder and musical notation an essential part of our curriculum. As well as this, we provide children with the opportunity to learn a variety of musical instruments. Experienced tutors are available to teach children piano, guitar, drums and a variety of brass and woodwind instruments. We have an excellent choir who attend a variety of events each year.



Sport

We believe that exercise and fitness are key parts of a healthy lifestyle for all children. We feel that it is our responsibility to give children as many opportunities as possible to find a form of exercise that they enjoy. For this reason, we offer children an extensive PE curriculum, and take great pride in our sports teams. These include hockey, netball, soccer, cross country and athletics. We also have excellent relationships with a number of expert coaches who provide after school clubs.

“I feel so proud to play for our school team. It has taught me about teamwork.” P7 Child



Learning Support

“All needs are cared for, and every name is known.” P7 Parent

We support all our pupils to ensure that they access a broad and balanced curriculum at every stage of their development. We place a great emphasis on ensuring that any child who is experiencing Special Educational Needs is given the attention and the uniquely tailored teaching that will enable them to overcome any challenges they may face.

Our Learning Support Teacher works in close partnership with our class teachers to assess children's needs and to devise individual programmes of support. Through close monitoring and regular parental consultation, each pupil will be helped and encouraged to achieve their full potential.

Where appropriate, the school works closely with the relevant external agencies in the support of all pupils with Special Educational Needs.

After School Clubs

As a school with a family ethos, Crawfordsburn seeks to provide opportunities and support for our children even after the school day has ended. This begins from a young age with all P1 to P3 children having the opportunity to attend an hour long After School Club, every day from 1:50pm to 2:50pm. This incorporates a variety of activities, including art, craft and play. P1-P3 can also avail of after school football, Miniversity and Jump, Jiggle and Jive.

For P4-P7 pupils, a variety of clubs operate daily from 2:50pm to 3:50pm. Clubs change on a termly basis and typically include; Miniversity, hockey, netball, football, athletics, Spanish, art, Eco-Club, drama, cookery club and STEM (Science, Technology, Engineering and Mathematics) Club.

“I always look forward to my After School Club!”

P4 Child



Partnering with Parents

“Along the way, we formed a positive relationship with every teacher.” P7 Parent

The family ethos of the school applies to everyone who comes through our doors. Crawfordsburn is a school where home-school links are actively promoted and where parents are an essential part of their child's education. To develop this partnership, we ensure that;

- We have an active and vibrant Parent Teacher Association (PTA). Our PTA organises a variety of events including family fun nights, Autumn and Summer Fairs, and barbeques.
- Our parent representatives on the Board of Governors are a valued resource.
- We have many parent volunteers who assist in many aspects of school life, such as, class trips and helping with whole school events.
- We seek feedback from parents through questionnaires and focus groups.
- In September there are year group meetings when parents can meet their child's teacher and hear about the year ahead.
- We also provide overviews of what children will be learning on a termly basis.
- We offer scheduled Parent/Teacher Meetings twice a year. As well as this we operate an “Open Door” policy whereby open lines of communication are encouraged at all times.
- A written overview of progress is provided every June.
- We use the SeeSaw Digital Portfolio App as a means of sharing, and celebrating children's work and progress directly with you.



Pastoral Care

“The smaller school setting really allows children's confidence to grow.” P4 Parent.

As a school we want our children to be as caring, creative and confident as possible. We have a child centred approach to pastoral care which sees us work closely alongside parents to ensure that all children are known and understood as individuals. We promote a positive and caring environment that allows children to reach their full potential.

Our approach to pupil behaviour is to focus on the positive. Children will display positive behaviour in an environment where it is celebrated and rewarded. We have a culture of high expectations where behaving in a responsible manner, showing respect for others and setting high standards in attendance, uniform and work are celebrated and rewarded.

We encourage children to be an active voice in our day to day school life.

- Our Pupil Council meets with our Senior Leadership Team to discuss matters important to our pupils.
- Our Eco-Council also contributes to running the school in an environmentally friendly way.
- We have an active and exciting House system in the school which allows children to take part in various competitions, while also rewarding them for positive behaviour.
- We also appoint P7 Playground Buddies and link individual P1 children with P7 Reading Buddies to ensure that every child feels part of the Crawfordsburn family.

“Being on Pupil Council means we are helping everyone in the school.” Pupil Council Member (P6)



Bright Sparks Pre-School Unit

As a parent, you want the very best for your child. Choosing your child's pre-school provider is the first important decision you will make about their educational future. By choosing Bright Sparks Pre-School, you will provide your child with an excellent start to their journey, learning through play.



Welcome to Bright Sparks Pre-School Unit



Bright Sparks Pre-School was officially opened in October 2008 by Lady Sylvia Hermon, after an amazingly successful first year. The Pre-School has been oversubscribed since this time and continues to go from strength to strength.

Bright Sparks enjoys the facilities of a beautiful activity room, kitchen, cloakroom and toilets and has the use of the school library, musical instruments, P.E. hall and an enclosed playground. There are a wealth of resources which provide an ideal learning environment for young children that is both stimulating and challenging. The children are both happy and secure. Each child is provided with an excellent start to their educational journey, learning through play in a balanced and flexible curriculum. The children are encouraged to develop emotionally, socially, physically and intellectually in relation to the seven areas of curriculum guidance for preschool. The Pre-School is committed towards independent and inquisitive learning.

At Bright Sparks Pre-School, we aim to involve parents in their child's education through close links between home and school. We recognise the importance of you, the parent, as your child's first educator.

Parents are welcome at all times and are encouraged to come into the playroom at the beginning and end of each session.

There will be a maximum of 20 children per session in the age range 3-4yrs admitted each year. Children may commence pre-school at the beginning of the term when they reach their 3rd birthday. Currently we provide 5 morning sessions from 8.45am to 11.45am.

Bright Sparks have their own uniform of a blue sweatshirt with the pre-school logo, which is available from the pre-school. A healthy snack is provided as an integral part of the session, at a small charge. Fees are reviewed annually by the Pre-School Management Committee. Please contact the school office for current prices.

Anyone who requires more information is invited to speak to the Principal of Crawfordsburn Primary School, Dr Graham Walker on 028 9185 3813, or directly to the Bright Sparks unit leader, Mrs Tracy McClenaghan on 07547 457473 or by email to brightsparkscps@gmail.com



Admissions

Crawfordsburn is a controlled, co-educational primary school. We are permitted to admit 30 P1 children each year. Admissions criteria are reviewed annually and subject to change. Each year our admissions criteria are listed on the Education Authority website (www.eani.org.uk). Similar arrangements are in place for admissions to Bright Sparks. Please contact the school office for the most up to date information and for any queries regarding children seeking a place in P2-P7.

Uniform

All pupils are encouraged to feel a sense of belonging to the school and encouraged to wear their uniforms with pride.

Our uniform is;

- School tie with a white shirt (short sleeves in P1 and P2)
- Navy school jumper / cardigan
- Charcoal grey trousers / shorts (summer)
- Navy skirt or pinafore (Blue gingham dress in summer term)

Our PE kit is;

- Gym shoes / Trainers
- Navy shorts / Navy tracksuit
- Coloured T-shirt (House Colour)
- Plain navy hoodie.



School Time-Table

8.15am	Breakfast Club Opens
8.45am	Supervision begins (playground or classroom, depending on the weather)
9.00am	Learning begins
10.40 - 10.50am	Morning Break
12:00 - 12:50pm	Lunchtime
1.50pm	P1 & P2 finish (P3 finish Wednesday, Thursday and Friday)
1.50 - 2.50pm	After school care is available to 2:50pm for P1-P3
2.50pm	P4 - P7 finish (P3 finish Monday and Tuesday)
2.50 - 3.50pm	After School Clubs



CRAWFORDSBURN Primary School

Crawfordsburn Primary School
4 Cootehall Road
BT19 1JA
Tel: 028 91853813



www.crawfordsburnps.com